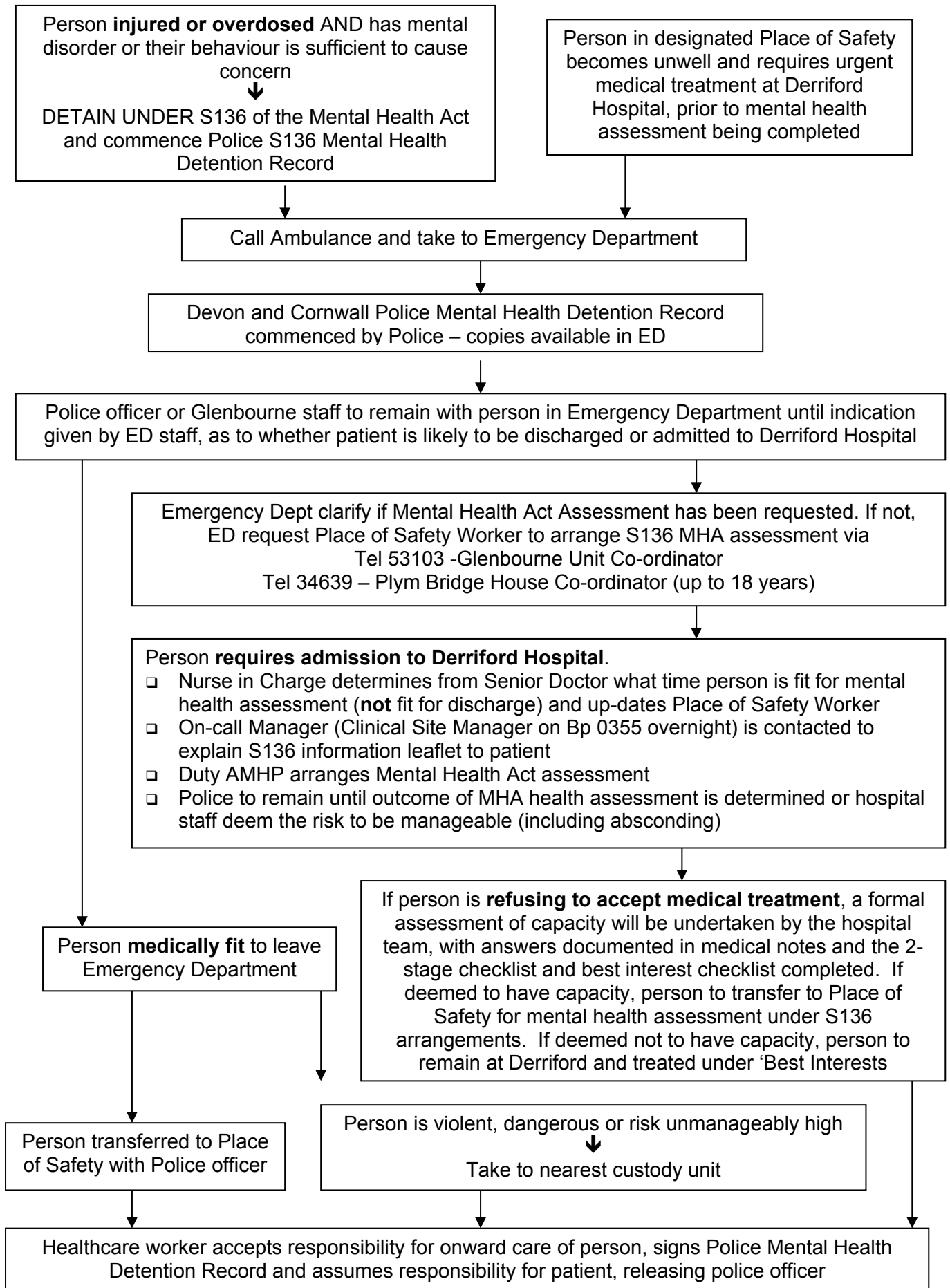


**LOCAL PROCEDURE FOR USE OF EMERGENCY DEPARTMENT
DERRIFORD HOSPITAL, PLYMOUTH FOR
S136 PATIENTS EN-ROUTE TO PLACE OF SAFETY**



Notes:

- ❑ The 72hr timing for a Mental Health Act Assessment starts at the point of detention by the Police
- ❑ Mental health assessments must be requested in a timely manner, in order for patients to be assessed and Police officers released
- ❑ The person should receive their mental health assessment when fit for assessment and not wait until medically fit for discharge
- ❑ ED Consultant can only support the process and is not able to discharge a person from the S136
- ❑ Intoxication should not delay general assessment process, although may delay formal Mental Health Act assessment
- ❑ Whilst in the Emergency Department, medication to relieve symptoms should be actively considered, including for those under the influence of drugs and/or alcohol
- ❑ Mental health assessment should be undertaken by S12 Approved Clinician and Approved Mental Health Professional. If the S12 Approved Clinician is delayed a non-S12 Approved Consultant Psychiatrist may be used. The reasons why a non-S12 Approved Consultant is used must be recorded. The On-call Junior Doctor must never be used for the Assessment
- ❑ Mental Health Team to continue to provide care and advice whilst finding appropriate bed
- ❑ Place of Safety Workers will co-ordinate the assessment and support ED staff in the management of the patient, until they move to the Place of Safety (Glenbourne or Plym Bridge).
- ❑ In the event that the Plym Bridge interim facility is not available, due to another child being in their extra care area, the CAMHS Place of Safety Worker will attend ED, to support the child, until follow on arrangements are agreed. When CAMHS Place of Safety becomes empty/available, the child will transfer to Plym Bridge.
- ❑ If a child is in mental health crisis in ED but has not been detained under S136 by the Police, they should be admitted to a paediatric bed on Level 12 at Derriford Hospital and detained under Section 5(2) of the Mental Health Act. The CAMHS Place of Safety Worker can be contacted for management and advice.